

**NIGHT PEOPLE // THE TWISTED WHEEL CLUB**  
**Venue Specification**

---

**Location:** 105-107 Princess Street, Manchester, M1 6DD  
On the corner of Princess Street and Bloom Street.

**Map:**



**Contacts:**

<b>Management:</b>	<b>Chris Slater</b>	<b>0161 236 9266</b>	<b>chris@nightpeoplemcr.com</b>
<b>Bookings:</b>	<b>Chris Slater</b>	<b>07796 488958</b>	<b>chrisslater909@gmail.com</b>

<b>Audio &amp; Lighting:</b>	<b>Alex Simmons</b>	<b>07463 182 568</b>	<b>alex@litenite.co.uk</b>
	<b>Vicky Searson</b>	<b>07917 784 508</b>	<b>vicky@litenite.co.uk</b>
	<b>Josh Williams</b>	<b>07786 230 106</b>	<b>josh@litenite.co.uk</b>

**NIGHT PEOPLE // THE TWISTED WHEEL CLUB**

**Venue Specification**

**General Info:**

Venue Capacity:	Live Room: 220 Club Room: 180 Third Room: 50	
Parking:	Street Parking	Pay & Display – Monday to Sunday: 0800-2000
Bus Parking:	Street Parking	When agreed with the venue management at least two weeks prior to show date.
Bus Power:	None Currently	
Load-In:	14.00	Earlier access possible when agreed with the venue manager prior to the show date.
Access:	Side Doors	Stairs down to live room & club room from street level.
Crew:	Available On Request	When agreed with the venue management at least two weeks prior to show date. ( )
Noise Curfew:	09.00 - 16.00	Monday to Friday only (office space above)
Dressing Room:	Available	Lockable with toilet & changing facilities.
Internet Access:	Available	SSID & password on request
Merchandise:	Stall available	Sales crew available when agreed with the venue management at least two weeks prior to show date (no commission fee). ( )
Catering:	In-house.	When agreed with the venue management at least two weeks prior to show date. ( )
Crowd-barriers:		On request ( )
Security:	In-house.	Standard up to 240 / 450 people. Extra security provided if agreed with the venue management at least two weeks prior to show date. ( )
Doors:	19.00	Unless otherwise agreed with the venue management prior to the show date. We can open the pre-bar earlier in a second room if required.

( ) – Provided at promoters' / bands' cost.

**Useful Info:**

<b>Hotels:</b>	<b>Restaurant:</b>	<b>Audio/Instrument Supplies:</b>	<b>Electronics:</b>
Ibis ** 96, Portland Street, Manchester, M1 4GX Tel: 0161 234 0600	Rice Unit 4, The Quadrangle, Chester St, Manchester. Tel: 0161 237 1570	Johnny Roadhouse 123, Oxford Road Manchester, M1 7DU Tel: 0161 273 1000	Maplin 8, Oxford Road, Manchester, M1 5QA Tel.: 0161 236 0281
Premier Inn *** 112-114 Portland Street, Manchester, M1 4WB Tel: 0870 238 3315		STS & Tour Supply Apollo Business Centre, Apsley Grove, Manchester M12 6AW Tel: 0161 273 5984	
Palace Hotel **** Oxford Street, Manchester, M60 7HA Tel.: 0161 288 1111		dbnAudile Downing Street Industrial Estate, Charlton Place, Ardwick, Manchester M12 6HH Tel: 0161 273 4297	

**NIGHT PEOPLE // THE TWISTED WHEEL CLUB**  
**Venue Specification**

**LIVE ROOM**

**PA System:**

**FOH**

Main PA: 2x Ohm TRS 212 (MF/HF) – 1 per side  
 2x Ohm TRS 218 (LF) – 1 per side  
 Delays: 2x Ohm Lunaray (MF/HF) – 1 per side  
 Amplification: 1x Ohm TK100 (4 channel, LF & MF/HF)  
 Processing: Ohm Cleo MkIII (with link to club room)  
 Mixing Console: Midas M32  
 Multicore: 32-way analogue multicore, 10 way analogue returns multicore

**Monitors**

Monitors: 4x Ohm BRT 12  
 1x Ohm BRT 15  
 Amplification: 1x Ohm TKXX (4 channel)  
 Processing: 2x Ohm Cleo MkII

Monitor console can be provided if agreed with the venue management / sound engineer  
 at least two weeks prior to show date ( )

**Microphones**

1x	Shure	Beta52
3x	Sennheiser	e914
3x	Sennheiser	e904
4 x	Shure	SM57
4 x	Shure	SM58
1 x	Shure	SM58s

**DIs**

6x	DBX Di1	
----	---------	--

**Stands**

7x	K&M	Tall Boom
4x	K&M	Short Boom

**DJ Gear**

2x	Pioneer	XDJ 1000 MK II
2x	Pioneer	CDJ-850
1x	Pioneer	DJM-800
1x	Pioneer	DJM-700
4x	Technics	SL1210-MkIII
6x	Concorde	Cartridges

## NIGHT PEOPLE // THE TWISTED WHEEL CLUB Venue Specification

---

### **Lighting:**

Back Truss:	4x Stairville LED Par56
Mid Truss:	4x Stairville LED Par56
Front Truss:	4x Stairville LED Par56
Room/Club:	3x Chauvet Intimidator LED150 Spot
Effects:	2 X LeMaitre MVS Hazer
Control:	ChamSys MagicQ & SnakeSys with touchscreen and iPad remote

### **Projection:**

1 x Optoma GT 1080e Short throw Projector, 3000 Lumens. Full 3D.  
1 x 92inch Screen, ceiling mounted in Live Room. Moveable to front or back of stage.

### **Backline Power:**

All power outlets are 230/240V CEE 16A or 13A with 16A > 13A 4-way or straight 13A 4-way.  
We do not stock Euro or US adaptors.

---

### **House Backline\*:**

(Hire to be requested in advance)  
Roland LX-7 Digital Piano (new)  
Ampeg SVT - CL (new)  
VOX AC-30 (new)  
1973 Fender Twin Reverb (vintage)  
Ludwig Element Evolution 22'' 6pc Kit & Zildjian ZBTs (house kit)

---

## **CLUB ROOM (THE TWISTED WHEEL ROOM)**

### **PA System:**

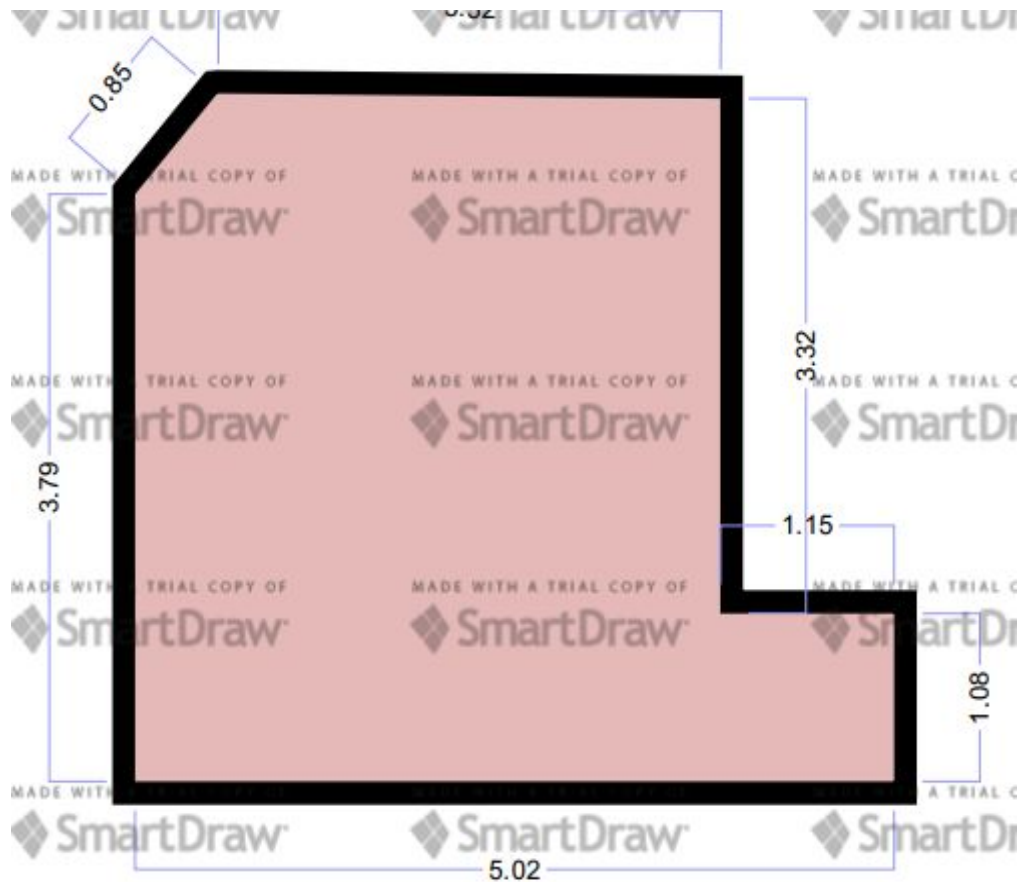
Main PA:	8x Ohm Lunaray (MF/HF) – spaced evenly around the room 4x Ohm Moonsub (LF) – 2 per side
Amplification:	3x Ohm CFU-A3
Processing:	Ohm Cleo MkII (with link to live room)

NIGHT PEOPLE // THE TWISTED WHEEL CLUB  
**Venue Specification**

**Lighting:**

Dancefloor: 4x Chauvet Intimidator LED150 Spot  
Room: 6x Stairville LED Par56  
Effects: 3x Chauvet LED UV Shadow  
LeMaitre MVS Hazer  
Control: Martin Light Jockey with touchscreen

**STAGE PLOT:**



Approx: 22sqm Stage area.

**THE LIVE ROOM @ NIGHT PEOPLE**



NIGHT PEOPLE // THE TWISTED WHEEL CLUB  
**Venue Specification**

